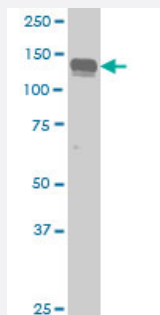


# AXL monoclonal antibody (M02), clone 6G1

Catalog # H00000558-M02

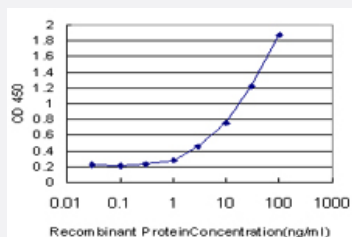
Size 100 ug

## Applications



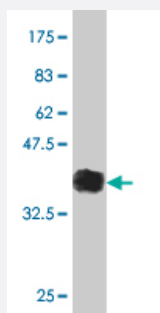
### Western Blot (Cell lysate)

AXL monoclonal antibody (M02), clone 6G1 Western Blot analysis of AXL expression in HeLa ( Cat # L013V1 ).



### Sandwich ELISA (Recombinant protein)

Detection limit for recombinant GST tagged AXL is approximately 1ng/ml as a capture antibody.



Western Blot detection against Immunogen (37.84 KDa) .

## Specification

### Product Description

Mouse monoclonal antibody raised against a partial recombinant AXL.

Immunogen	AXL (AAH32229, 30 a.a. ~ 140 a.a) partial recombinant protein with GST tag. MW of the GST tag alone is 26 KDa.
Sequence	TQAEESPFVGNPGNITGARGLTGTLRCQLQVQGEPPVHWLRDGGQILELADSTQTQVPLGEDEQDDWIVVSQLRITSLQLSDTGQYQCLVFLGHQTFVSQPGYVGLEGLPY
Host	Mouse
Reactivity	Human
Isotype	IgG2a Kappa
Quality Control Testing	Antibody Reactive Against Recombinant Protein. Western Blot detection against Immunogen (37.84 KDa) .
Storage Buffer	In 1x PBS, pH 7.4
Storage Instruction	Store at -20°C or lower. Aliquot to avoid repeated freezing and thawing.

## Applications

- Western Blot (Cell lysate)

AXL monoclonal antibody (M02), clone 6G1 Western Blot analysis of AXL expression in HeLa ( Cat # L013V1 ).

[Protocol Download](#)

- Western Blot (Recombinant protein)

[Protocol Download](#)

- Sandwich ELISA (Recombinant protein)

Detection limit for recombinant GST tagged AXL is approximately 1ng/ml as a capture antibody.

[Protocol Download](#)

- ELISA

## Gene Info — AXL

Entrez GeneID	<a href="#">558</a>
GeneBank Accession#	<a href="#">BC032229</a>
Protein Accession#	<a href="#">AAH32229</a>

Gene Name	AXL
Gene Alias	JTK11, UFO
Gene Description	AXL receptor tyrosine kinase
Omim ID	<a href="#">109135</a>
Gene Ontology	<a href="#">Hyperlink</a>
Gene Summary	<p>The protein encoded by this gene is a member of the receptor tyrosine kinase subfamily. Although it is similar to other receptor tyrosine kinases, this protein represents a unique structure of the extracellular region that juxtaposes IgL and FNIII repeats. It transduces signals from the extracellular matrix into the cytoplasm by binding growth factors like vitamin K-dependent protein growth-arrest-specific gene 6. It is involved in the stimulation of cell proliferation and can also mediate cell aggregation by homophilic binding. Alternatively spliced transcript variants encoding different isoforms have been identified. [provided by RefSeq]</p>
Other Designations	AXL transforming sequence/gene oncogene AXL

## Disease

- [Cardiovascular Diseases](#)
- [Carotid Artery Diseases](#)
- [Diabetes Mellitus](#)
- [Edema](#)
- [Genetic Predisposition to Disease](#)
- [Stroke](#)