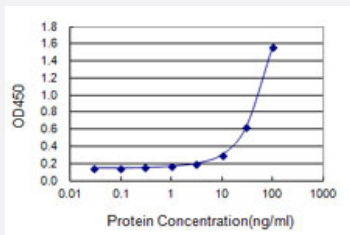


# ATF4 (Human) Matched Antibody Pair

Catalog # H00000468-AP41      Size 1 Set

## Applications



Sandwich ELISA detection sensitivity ranging from 3 ng/ml to 100 ng/ml.

## Specification

<b>Product Description</b>	This antibody pair set comes with a matched antibody pair to detect and quantify the protein level of human ATF4.
<b>Reactivity</b>	Human
<b>Quality Control Testing</b>	Standard curve using recombinant protein ( H00000468-P01 ) as an analyte. Sandwich ELISA detection sensitivity ranging from 3 ng/ml to 100 ng/ml.
<b>Supplied Product</b>	Antibody pair set content: 1. Capture antibody: mouse monoclonal anti-ATF4, IgG1 Kappa (100 ug) 2. Detection antibody: biotinylated mouse monoclonal anti-ATF4, IgG2a Kappa (50 ug) *Reagents are sufficient for at least 3-5 x 96 well plates using recommended protocols.
<b>Storage Instruction</b>	Store reagents of the antibody pair set at -20°C or lower. Please aliquot to avoid repeated freeze thaw cycle. Reagents should be returned to -20°C storage immediately after use.

## Applications

- ELISA Pair (Recombinant protein)

[Protocol Download](#)

## Gene Info — ATF4

Entrez GeneID [468](#)

Gene Name ATF4

Gene Alias CREB-2, CREB2, TAXREB67, TXREB

Gene Description activating transcription factor 4 (tax-responsive enhancer element B67)

Omim ID [604064](#)

Gene Ontology [Hyperlink](#)

**Gene Summary**

This gene encodes a transcription factor that was originally identified as a widely expressed mammalian DNA binding protein that could bind a tax-responsive enhancer element in the LTR of HTLV-1. The encoded protein was also isolated and characterized as the cAMP-response element binding protein 2 (CREB-2). The protein encoded by this gene belongs to a family of DNA-binding proteins that includes the AP-1 family of transcription factors, cAMP-response element binding proteins (CREBs) and CREB-like proteins. These transcription factors share a leucine zipper region that is involved in protein-protein interactions, located C-terminal to a stretch of basic amino acids that functions as a DNA binding domain. Two alternative transcripts encoding the same protein have been described. Two pseudogenes are located on the X chromosome at q28 in a region containing a large inverted duplication. [provided by RefSeq]

**Other Designations** activating transcription factor 4|cAMP response element-binding protein 2

## Pathway

- [GnRH signaling pathway](#)
- [Long-term potentiation](#)
- [MAPK signaling pathway](#)
- [Neurotrophin signaling pathway](#)
- [Prostate cancer](#)

## Disease

- [Bipolar Disorder](#)
- [Genetic Predisposition to Disease](#)
- [Mental Disorders](#)

- [Neuropsychological Tests](#)
- [Schizophrenia](#)