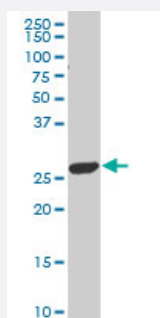


# APCS polyclonal antibody (A02)

Catalog # H00000325-A02

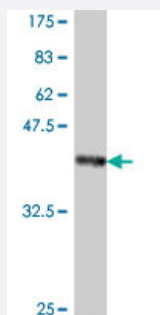
Size 50 uL

## Applications



### Western Blot (Tissue lysate)

APCS polyclonal antibody (A02), Lot # 051011JC01. Western Blot analysis of APCS expression in human ovarian cancer.



Western Blot detection against Immunogen (37.88 KDa) .

## Specification

Product Description	Mouse polyclonal antibody raised against a partial recombinant APCS.
Immunogen	APCS (NP_001630, 117 a.a. ~ 223 a.a) partial recombinant protein with GST tag.
Sequence	WESSSGIAEFWINGTPLVKKGLRQGYFVEAQPKIVLGQEQDSYGGKFDRSQSFVGEIGDLYMWD SVLPENILSAYQGTPLPANILDWQALNVEIRGYVIKPLVWV
Host	Mouse
Reactivity	Human
Interspecies Antigen Sequence	Mouse (68); Rat (73)

**Quality Control Testing**

Antibody Reactive Against Recombinant Protein.  
Western Blot detection against Immunogen (37.88 KDa) .

**Storage Buffer**

50 % glycerol

**Storage Instruction**

Store at -20°C or lower. Aliquot to avoid repeated freezing and thawing.

## Applications

- Western Blot (Tissue lysate)

APCS polyclonal antibody (A02), Lot # 051011JC01. Western Blot analysis of APCS expression in human ovarian cancer.

[Protocol Download](#)

- Western Blot (Recombinant protein)

[Protocol Download](#)

- ELISA

## Gene Info — APCS

**Entrez GeneID**

[325](#)

**GeneBank Accession#**

[NM\\_001639](#)

**Protein Accession#**

[NP\\_001630](#)

**Gene Name**

APCS

**Gene Alias**

MGC88159, PTX2, SAP

**Gene Description**

amyloid P component, serum

**Omim ID**

[104770](#)

**Gene Ontology**

[Hyperlink](#)

**Gene Summary**

The protein encoded by this gene is a glycoprotein, belonging to the pentraxin family of proteins, which has a characteristic pentameric organization. These family members have considerable sequence homology which is thought to be the result of gene duplication. The binding of the encoded protein to proteins in the pathological amyloid cross-beta fold suggests its possible role as a chaperone. This protein is also thought to control the degradation of chromatin. It has been demonstrated that this protein binds to apoptotic cells at an early stage, which raises the possibility that it is involved in dealing with apoptotic cells in vivo. [provided by RefSeq]

**Other Designations**

9.5S alpha-1-glycoprotein|OTTHUMP00000024355|pentaxin-related|serum amyloid P component

**Disease**

- [Amyloid Neuropathies](#)
- [Atherosclerosis](#)
- [Calcinosis](#)
- [Coronary Artery Disease](#)
- [Genetic Predisposition to Disease](#)
- [Lupus Erythematosus](#)