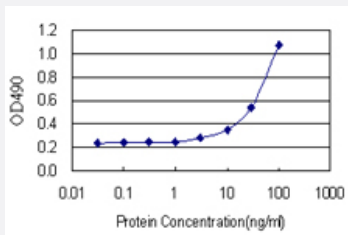


ANXA1 (Human) Matched Antibody Pair

Catalog # H00000301-AP21

Size 1 Set

Applications



Sandwich ELISA detection sensitivity ranging from 3 ng/ml to 100 ng/ml.

Specification

Product Description	This antibody pair set comes with a matched antibody pair to detect and quantify the protein level of human ANXA1.
Reactivity	Human
Interspecies Antigen Sequence	Mouse (87%); Rat (89%)
Quality Control Testing	Standard curve using recombinant protein (H00000301-P02) as an analyte. Sandwich ELISA detection sensitivity ranging from 3 ng/ml to 100 ng/ml.
Supplied Product	Antibody pair set content: 1. Capture antibody: rabbit MaxPab® affinity purified polyclonal anti-ANXA1 (100 ug) 2. Detection antibody: mouse purified polyclonal anti-ANXA1 (20 ug) *Reagents are sufficient for at least 1-2 x 96 well plates using recommended protocols.
Storage Instruction	Store reagents of the antibody pair set at -20°C or lower. Please aliquot to avoid repeated freeze thaw cycle. Reagents should be returned to -20°C storage immediately after use.

Applications

- ELISA Pair (Recombinant protein)

[Protocol Download](#)

Gene Info — ANXA1

Entrez GeneID [301](#)

Gene Name ANXA1

Gene Alias ANX1, LPC1

Gene Description annexin A1

Omim ID [151690](#)

Gene Ontology [Hyperlink](#)

Gene Summary Annexin I belongs to a family of Ca(2+)-dependent phospholipid binding proteins which have a molecular weight of approximately 35,000 to 40,000 and are preferentially located on the cytosolic face of the plasma membrane. Annexin I protein has an apparent relative molecular mass of 40 kDa, with phospholipase A2 inhibitory activity. Since phospholipase A2 is required for the biosynthesis of the potent mediators of inflammation, prostaglandins and leukotrienes, annexin I may have potential anti-inflammatory activity. [provided by RefSeq]

Other Designations OTTHUMP00000021474|OTTHUMP00000021475|annexin I|annexin I (lipocortin I)|lipocortin I

Disease

- [Cardiovascular Diseases](#)
- [Diabetes Mellitus](#)
- [Edema](#)