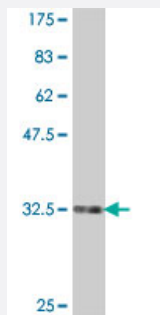


SLC25A6 polyclonal antibody (A01)

Catalog # H00000293-A01

Size 50 uL

Applications



Western Blot detection against Immunogen (34.36 KDa) .

Specification

Product Description	Mouse polyclonal antibody raised against a partial recombinant SLC25A6.
Immunogen	SLC25A6 (NP_001627, 135 a.a. ~ 209 a.a) partial recombinant protein with GST tag.
Sequence	DFARTRLAADVGKSGTEREFRGLGDCLVKITKSDGIRGLYQGFSVSVQGIIYRAAYFGVYDTAKGMLPDPKNTH
Host	Mouse
Reactivity	Human
Quality Control Testing	Antibody Reactive Against Recombinant Protein. Western Blot detection against Immunogen (34.36 KDa) .
Storage Buffer	50 % glycerol
Storage Instruction	Store at -20°C or lower. Aliquot to avoid repeated freezing and thawing.

Applications

- Western Blot (Recombinant protein)

[Protocol Download](#)

- ELISA

Gene Info — SLC25A6

Entrez GeneID	293
GeneBank Accession#	NM_001636
Protein Accession#	NP_001627
Gene Name	SLC25A6
Gene Alias	AAC3, ANT3, ANT3Y, MGC17525
Gene Description	solute carrier family 25 (mitochondrial carrier; adenine nucleotide translocator), member 6
Omim ID	300151 403000
Gene Ontology	Hyperlink
Gene Summary	This gene is a member of the mitochondrial carrier subfamily of solute carrier protein genes. The product of this gene functions as a gated pore that translocates ADP from the mitochondrial matrix into the cytoplasm. The protein is implicated in the function of the permeability transition pore complex (PTPC), which regulates the release of mitochondrial products that induce apoptosis. The human genome contains several non-transcribed pseudogenes of this gene. [provided by RefSeq]
Other Designations	ADP,ATP carrier protein, liver ADP/ATP translocase 3 ADP/ATP translocator of liver OTTHUMP0000022826 adenine nucleotide translocator 3 solute carrier family 25, member A6

Pathway

- [Calcium signaling pathway](#)