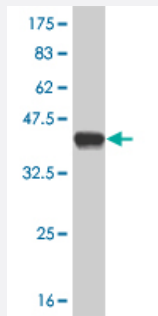


ALPPL2 polyclonal antibody (A01)

Catalog # H00000251-A01

Size 50 uL

Applications



Western Blot detection against Immunogen (36.01 KDa) .

Specification

Product Description	Mouse polyclonal antibody raised against a partial recombinant ALPPL2.
Immunogen	ALPPL2 (NP_112603, 365 a.a. ~ 454 a.a) partial recombinant protein with GST tag.
Sequence	SEEDTLSLVTADHSHVFSFGGYPLRGSSIFGLAPGKARDRKAYTVLLYGNGPGYVLKDGARPDVT EESGSGPEYRQQSAVPLDGETHAGE
Host	Mouse
Reactivity	Human
Interspecies Antigen Sequence	Mouse (71)
Quality Control Testing	Antibody Reactive Against Recombinant Protein. Western Blot detection against Immunogen (36.01 KDa) .
Storage Buffer	50 % glycerol
Storage Instruction	Store at -20°C or lower. Aliquot to avoid repeated freezing and thawing.

Applications

- Western Blot (Recombinant protein)

[Protocol Download](#)

- ELISA

Gene Info — ALPPL2

Entrez GeneID [251](#)

GeneBank Accession# [NM_031313](#)

Protein Accession# [NP_112603](#)

Gene Name ALPPL2

Gene Alias ALPG, ALPPL, GCAP

Gene Description alkaline phosphatase, placental-like 2

Omim ID [171810](#)

Gene Ontology [Hyperlink](#)

Gene Summary There are at least four distinct but related alkaline phosphatases: intestinal, placental, placental-like, and liver/bone/kidney (tissue non-specific). The product of this gene is a membrane bound glycosylated enzyme, localized to testis, thymus and certain germ cell tumors, that is closely related to both the placental and intestinal forms of alkaline phosphatase. [provided by RefSeq]

Other Designations Nagao isozyme|germ cell alkaline phosphatase|placental-like alkaline phosphatase|testicular and thymus alkaline phosphatase

Pathway

- [Folate biosynthesis](#)
- [gamma-Hexachlorocyclohexane degradation](#)
- [Metabolic pathways](#)