

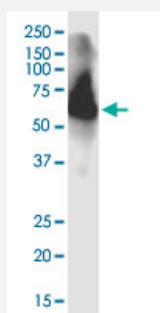
CX Grade

# AFP monoclonal antibody (M01J), clone 1G7

Catalog # H00000174-M01J

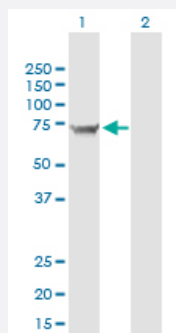
Size 100 ug

## Applications



### Western Blot (Cell lysate)

AFP monoclonal antibody (M01J), clone 1G7. Western Blot analysis of AFP expression in HepG2.



### Western Blot (Transfected lysate)

Western Blot analysis of AFP expression in transfected 293T cell line by AFP monoclonal antibody (M01J), clone 1G7.

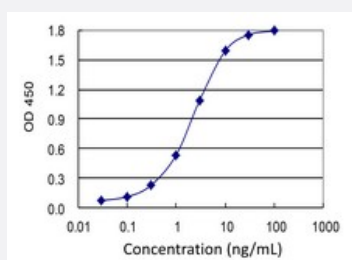
Lane 1: AFP transfected lysate (Predicted MW: 68.7 kDa).

Lane 2: Non-transfected lysate.



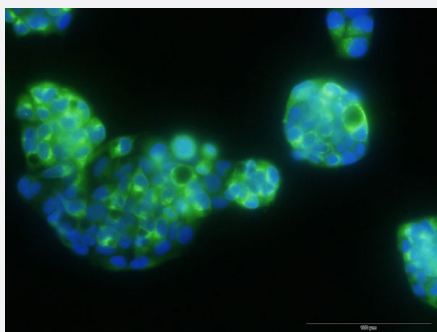
### Immunoprecipitation

Immunoprecipitation of AFP transfected lysate using anti-AFP monoclonal antibody and Protein A Magnetic Bead, and immunoblotted with AFP MaxPab rabbit polyclonal antibody.



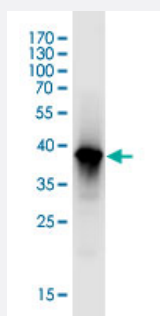
### Sandwich ELISA (Recombinant protein)

Detection limit for recombinant GST tagged AFP is 0.03 ng/ml as a capture antibody.



## Immunofluorescence

Immunofluorescence of monoclonal antibody to AFP on HepG2 cell . [antibody concentration 30 ug/ml]



Western Blot detection against Immunogen (37.84 KDa) .

## Specification

<b>Product Description</b>	Mouse monoclonal antibody raised against a partial recombinant AFP. This product is belong to Cell Culture Grade Antibody (CX Grade).
<b>Immunogen</b>	AFP (AAH27881.1, 500 a.a. ~ 609 a.a) partial recombinant protein with GST tag. MW of the GST tag alone is 26 KDa.
<b>Sequence</b>	CCTSSYANRRPCFSSLVVDETYVPPAFSDDKFIFHKDLCQAQGVALQTMKQEFLINLVKQKPQITE EQLEAVIADFSGLLEKCCQGQEQEVCFAEEGQKLISKTRAALGV
<b>Host</b>	Mouse
<b>Reactivity</b>	Human
<b>Interspecies Antigen Sequence</b>	Mouse (79); Rat (78)
<b>Preparation Method</b>	Cell Culture Production
<b>Isotype</b>	IgG2a Kappa
<b>Quality Control Testing</b>	Antibody Reactive Against Recombinant Protein. Western Blot detection against Immunogen (37.84 KDa) .
<b>Storage Buffer</b>	In 1x PBS, pH 7.4
<b>Storage Instruction</b>	Store at -20°C or lower. Aliquot to avoid repeated freezing and thawing.

## Applications

- Western Blot (Cell lysate)

AFP monoclonal antibody (M01J), clone 1G7. Western Blot analysis of AFP expression in HepG2.

[Protocol Download](#)

- Western Blot (Transfected lysate)

Western Blot analysis of AFP expression in transfected 293T cell line by AFP monoclonal antibody (M01J), clone 1G7.

Lane 1: AFP transfected lysate (Predicted MW: 68.7 KDa).

Lane 2: Non-transfected lysate.

[Protocol Download](#)

- Western Blot (Recombinant protein)

[Protocol Download](#)

- Immunoprecipitation

Immunoprecipitation of AFP transfected lysate using anti-AFP monoclonal antibody and Protein A Magnetic Bead, and immunoblotted with AFP MaxPab rabbit polyclonal antibody.

[Protocol Download](#)

- Sandwich ELISA (Recombinant protein)

Detection limit for recombinant GST tagged AFP is 0.03 ng/ml as a capture antibody.

[Protocol Download](#)

- ELISA

- Immunofluorescence

Immunofluorescence of monoclonal antibody to AFP on HepG2 cell . [antibody concentration 30 ug/ml]

## Gene Info — AFP

Entrez GeneID

[174](#)

GeneBank Accession#

[BC027881.1](#)

Protein Accession#	<a href="#">AAH27881.1</a>
Gene Name	AFP
Gene Alias	FETA, HPAFP
Gene Description	alpha-fetoprotein
Omim ID	<a href="#">104150</a>
Gene Ontology	<a href="#">Hyperlink</a>
Gene Summary	<p>This gene encodes alpha-fetoprotein, a major plasma protein produced by the yolk sac and the liver during fetal life. Alpha-fetoprotein expression in adults is often associated with hepatoma or teratoma. However, hereditary persistence of alpha-fetoprotein may also be found in individuals with no obvious pathology. The protein is thought to be the fetal counterpart of serum albumin, and the alpha-fetoprotein and albumin genes are present in tandem in the same transcriptional orientation on chromosome 4. Alpha-fetoprotein is found in monomeric as well as dimeric and trimeric forms, and binds copper, nickel, fatty acids and bilirubin. The level of alpha-fetoprotein in amniotic fluid is used to measure renal loss of protein to screen for spina bifida and anencephaly. [provided by RefSeq]</p>
Other Designations	OTTHUMP00000160480 alpha-1-fetoprotein alpha-fetoglobulin

## Disease

- [Carcinoma](#)
- [Liver Cirrhosis](#)
- [Liver Neoplasms](#)