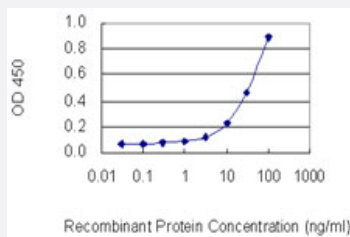


# ACTG1 monoclonal antibody (M01), clone 1G6

Catalog # H00000071-M01

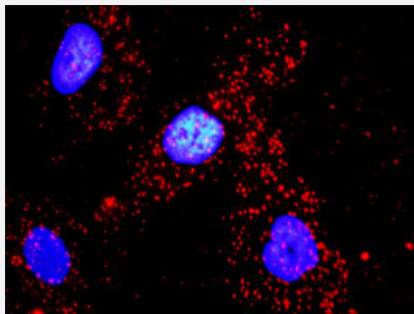
Size 100 ug

## Applications



### Sandwich ELISA (Recombinant protein)

Detection limit for recombinant GST tagged ACTG1 is 1 ng/ml as a capture antibody.



### In situ Proximity Ligation Assay (Cell)

Proximity Ligation Analysis of protein-protein interactions between VASP and ACTG1. HeLa cells were stained with anti-VASP rabbit purified polyclonal 1:1200 and anti-ACTG1 mouse monoclonal antibody 1:50. Each red dot represents the detection of protein-protein interaction complex, and nuclei were counterstained with DAPI (blue).

## Specification

### Product Description

Mouse monoclonal antibody raised against a full length recombinant ACTG1.

### Immunogen

ACTG1 (AAH53572, 1 a.a. ~ 375 a.a) full-length recombinant protein with GST tag. MW of the GST tag alone is 26 KDa.

### Sequence

MEEEIAALVIDNGSGMCKAGFAGDDAPRAVFPSVGRPRHQGVVMGMGQKDSYVGDEAQSCKRG  
ILTLKYPIDHGVNTWDDMEKIWHHTFYNELRVAPEEHPVLLTEAPLNPKANREKMTQIMFETFNTP  
AMYVAIQAVLSLYASGRRTGVMDSGDGVTHTVPIYEGYALPHAILRLDLAGRDLTDYLMKILTERGY  
SFTTTAERENVRDKEKLCYVALDFEQEMATAASSSSLEKSYELPDGQVITIGNERFRCPEALFQPS  
FLGMESCGIHETTFNSIMKCDVDIRKDLANTVLSGGTMYPGIADRMQKEITALAPSTMKIKIAPPE  
RKYSVWIGGSILASLSTFQQMWISKQEYDESGPSVHRKCF

### Host

Mouse

Reactivity	Human
Isotype	IgG1 Kappa
Quality Control Testing	Antibody Reactive Against Recombinant Protein.
Storage Buffer	In 1x PBS, pH 7.4
Storage Instruction	Store at -20°C or lower. Aliquot to avoid repeated freezing and thawing.

## Applications

- Sandwich ELISA (Recombinant protein)

Detection limit for recombinant GST tagged ACTG1 is 1 ng/ml as a capture antibody.

[Protocol Download](#)

- ELISA

- *In situ* Proximity Ligation Assay (Cell)

Proximity Ligation Analysis of protein-protein interactions between VASP and ACTG1. HeLa cells were stained with anti-VASP rabbit purified polyclonal 1:1200 and anti-ACTG1 mouse monoclonal antibody 1:50. Each red dot represents the detection of protein-protein interaction complex, and nuclei were counterstained with DAPI (blue).

## Gene Info — ACTG1

Entrez GeneID	<a href="#">71</a>
GeneBank Accession#	<a href="#">BC053572</a>
Protein Accession#	<a href="#">AAH53572</a>
Gene Name	ACTG1
Gene Alias	ACT, ACTG, DFNA20, DFNA26
Gene Description	actin, gamma 1
Omim ID	<a href="#">102560 604717</a>
Gene Ontology	<a href="#">Hyperlink</a>

**Gene Summary**

Actins are highly conserved proteins that are involved in various types of cell motility, and maintenance of the cytoskeleton. In vertebrates, three main groups of actin isoforms, alpha, beta and gamma have been identified. The alpha actins are found in muscle tissues and are a major constituent of the contractile apparatus. The beta and gamma actins co-exist in most cell types as components of the cytoskeleton, and as mediators of internal cell motility. Actin, gamma 1, encoded by this gene, is a cytoplasmic actin found in nonmuscle cells. [provided by RefSeq]

**Other Designations**

actin, cytoplasmic 2|actin, gamma 1 propeptide|cytoskeletal gamma-actin

**Publication Reference**

- [In-depth analysis of cysteine oxidation by the RBC proteome: Advantage of peroxiredoxin II knockout mice.](#)

Yang HY, Kwon J, Choi HI, Park SH, Yang U, Park HR, Ren L, Chung KJ, U Kim Y, Park BJ, Jeong SH, Lee TH.

Proteomics 2012 Jan; 12(1):101.

Application: WB, Beads

**Pathway**

- [Adherens junction](#)
- [Arrhythmogenic right ventricular cardiomyopathy \(ARVC\)](#)
- [Focal adhesion](#)
- [Hypertrophic cardiomyopathy \(HCM\)](#)
- [Leukocyte transendothelial migration](#)
- [Pathogenic Escherichia coli infection - EHEC](#)
- [Regulation of actin cytoskeleton](#)
- [Tight junction](#)
- [Vibrio cholerae infection](#)