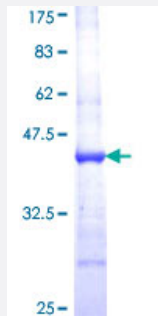


# ABCF1 (Human) Recombinant Protein (Q01)

Catalog # H00000023-Q01

Size 25 ug, 10 ug

## Applications



## Specification

<b>Product Description</b>	Human ABCF1 partial ORF ( NP_001081 , 642 a.a. - 739 a.a.) recombinant protein with GST-tag at N-terminal.
<b>Sequence</b>	GEMRKNHRLKIGFFNQYAEQLRMEETPTEYLQRGFNLPHYQDARKCLGRFGLESHAHTIQICKLSG GQKARVVFAELACREPDVLILDEPTNNLDIES
<b>Host</b>	Wheat Germ (in vitro)
<b>Theoretical MW (kDa)</b>	36.52
<b>Interspecies Antigen Sequence</b>	Mouse (98); Rat (99)
<b>Preparation Method</b>	<a href="#">in vitro wheat germ expression system</a>
<b>Purification</b>	Glutathione Sepharose 4 Fast Flow
<b>Quality Control Testing</b>	12.5% SDS-PAGE Stained with Coomassie Blue.
<b>Storage Buffer</b>	50 mM Tris-HCl, 10 mM reduced Glutathione, pH=8.0 in the elution buffer.
<b>Storage Instruction</b>	Store at -80°C. Aliquot to avoid repeated freezing and thawing.
<b>Note</b>	Best use within three months from the date of receipt of this protein.

## Applications

- Enzyme-linked Immunoabsorbent Assay
- Western Blot (Recombinant protein)
- Antibody Production
- Protein Array

## Gene Info — ABCF1

Entrez GeneID [23](#)

GeneBank Accession# [NM\\_001090](#)

Protein Accession# [NP\\_001081](#)

Gene Name ABCF1

Gene Alias ABC27, ABC50

Gene Description ATP-binding cassette, sub-family F (GCN20), member 1

Omim ID [603429](#)

Gene Ontology [Hyperlink](#)

**Gene Summary** The protein encoded by this gene is a member of the superfamily of ATP-binding cassette (ABC) transporters. ABC proteins transport various molecules across extra- and intra-cellular membranes. ABC genes are divided into seven distinct subfamilies (ABC1, MDR/TAP, MRP, ALD, OABP, GCN20, White). This protein is a member of the GCN20 subfamily. Unlike other members of the superfamily, this protein lacks the transmembrane domains which are characteristic of most ABC transporters. This protein may be regulated by tumor necrosis factor-alpha and play a role in enhancement of protein synthesis and the inflammation process. [provided by RefSeq]

**Other Designations** ATP-binding cassette 50 (TNF-alpha stimulated)|ATP-binding cassette, sub-family F, member 1|OTTHUMP00000029110|OTTHUMP00000029111|TNFalpha-inducible ATP-binding protein

## Disease

- [Genetic Predisposition to Disease](#)
- [Lupus Erythematosus](#)

- [Spondylitis](#)