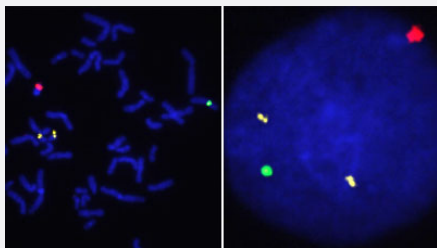


3-Color FISH Probe (chromosome 21, X & Y)

Catalog # FM0005 Size 200 uL

Applications



Hybridization position of the probes on the chromosome:

Hybridization position of the probes on the chromosome:

□

Specification

Product Description Labeled FISH probes for identification of prenatal chromosomal aberrations using Fluorescent In Situ Hybridization Technique. ([Technology](#)).

Probe 1 **Name:** CEN21q (DYRK1A Gene /Down syndrome critical region)
Size: Approximately 550kb
Fluorophore: R6G
Location: 21q22.13

Probe 2 **Name:** CENXp
Size: Approximately 550kb
Fluorophore: FITC
Location: Xp11.23

Probe 3

Name: CENYq
Size: Approximately 470kb
Fluorophore: Texas Red
Location: Yq11.221

Origin

Human

Source

Genomic DNA

Reactivity

Human

Notice

We **strongly recommend** the customer to use FFPE FISH PreTreatment Kit 1 (Catalog #: [KA2375](#) or [KA2691](#)) for the pretreatment of Formalin-Fixed Paraffin-Embedded (FFPE) tissue sections.

Regulation Status

For research use only (RUO)

Quality Control Testing

Representative images of normal human cell (lymphocyte) stain with the multi-color FISH probe. The left image is chromosomes at metaphase, and the right image is an interphase nucleus (CEN21q, yellow; CENXp, green; CENYq, red).

Storage Instruction

Store at 4°C in the dark.

Note

Hybridization position of the probes on the chromosome:
Hybridization position of the probes on the chromosome:

Applications

- Fluorescent In Situ Hybridization (Cell)

[Protocol Download](#)