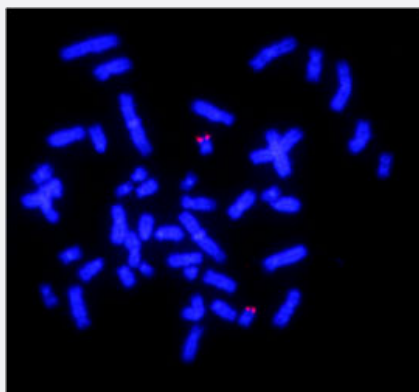


## 20q Subtelomere(Texas Red) FISH Probe

Catalog # FE0182

Size 20 uL

### Applications



Hybridization position of the probes on the chromosome:

Hybridization position of the probes on the chromosome:

### Specification

#### Product Description

Labeled FISH probes for identification of subtelomere aberrations using Fluorescent In Situ Hybridization Technique. ([Technology](#)).

#### Probe

**Name:** 20q Subtelomere  
**Size:** Approximately 300kb  
**Fluorophore:** Texas Red  
**Location:** 20q Subtelomere

#### Origin

Human

#### Source

Genomic DNA

#### Reactivity

Human

<b>Notice</b>	We <b>strongly recommend</b> the customer to use FFPE FISH PreTreatment Kit 1 (Catalog #: <a href="#">KA2375</a> or <a href="#">KA2691</a> ) for the pretreatment of Formalin-Fixed Paraffin-Embedded (FFPE) tissue sections.
<b>Regulation Status</b>	For research use only (RUO)
<b>Quality Control Testing</b>	Representative images of normal human cell (lymphocyte) at metaphase stain with the FISH probe.
<b>Recommend Usage</b>	The probe is provided in 5x concentrated format, to allow mixing of up to 5 Subtelomere FISH Probes in a single hybridization assay. When used alone, it should be diluted to 1x with FISH Hybridization Buffer (Cat # <a href="#">U0028</a> or <a href="#">U0029</a> ) before use.
<b>Supplied Product</b>	FISH Hybridization Buffer (80 uL)
<b>Storage Instruction</b>	Store at 4°C in the dark.
<b>Note</b>	Hybridization position of the probes on the chromosome: Hybridization position of the probes on the chromosome:

## Applications

- Fluorescent In Situ Hybridization (Cell)

[Protocol Download](#)