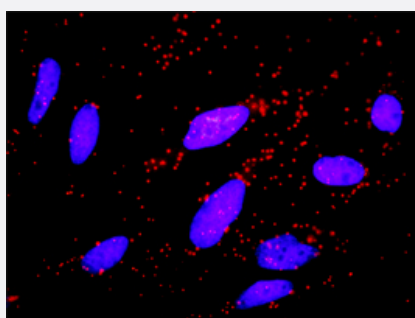


# CCNB1 & FZR1 Protein Protein Interaction Antibody Pair

Catalog # DI0213

Size 1 Set

## Applications



Representative image of Proximity Ligation Assay of protein-protein interactions between CCNB1 and FZR1. HeLa cells were stained with anti-CCNB1 rabbit purified polyclonal antibody 1:1200 and anti-FZR1 mouse monoclonal antibody 1:50. Each red dot represents the detection of protein-protein interaction complex. The images were analyzed using an optimized freeware (BlobFinder) download from The Centre for Image Analysis at Uppsala University.

## Specification

### Product Description

This protein protein interaction antibody pair set comes with two antibodies to detect the protein-protein interaction, one against the CCNB1 protein, and the other against the FZR1 protein for use in [in situ Proximity Ligation Assay](#). [See Publication Reference below](#).

### Reactivity

Human

### Quality Control Testing

Protein protein interaction immunofluorescence result.  
Representative image of Proximity Ligation Assay of protein-protein interactions between CCNB1 and FZR1. HeLa cells were stained with anti-CCNB1 rabbit purified polyclonal antibody 1:1200 and anti-FZR1 mouse monoclonal antibody 1:50. Each red dot represents the detection of protein-protein interaction complex. The images were analyzed using an optimized freeware (BlobFinder) download from The Centre for Image Analysis at Uppsala University.

### Supplied Product

Antibody pair set content:  
1. CCNB1 rabbit purified polyclonal antibody (100 ug)  
2. FZR1 mouse monoclonal antibody (40 ug)  
\*Reagents are sufficient for at least 30-50 assays using recommended protocols.

### Storage Instruction

Store reagents of the antibody pair set at -20°C or lower. Please aliquot to avoid repeated freeze-thaw cycle. Reagents should be returned to -20°C storage immediately after use.

## Applications

- *In situ* Proximity Ligation Assay (Cell)

## Gene Info — CCNB1

Entrez GeneID	<a href="#">891</a>
Gene Name	CCNB1
Gene Alias	CCNB
Gene Description	cyclin B1
Omim ID	<a href="#">123836</a>
Gene Ontology	<a href="#">Hyperlink</a>
Gene Summary	The protein encoded by this gene is a regulatory protein involved in mitosis. The gene product complexes with p34(cdc2) to form the maturation-promoting factor (MPF). Two alternative transcripts have been found, a constitutively expressed transcript and a cell cycle-regulated transcript, that is expressed predominantly during G2/M phase. The different transcripts result from the use of alternate transcription initiation sites. [provided by RefSeq]
Other Designations	G2/mitotic-specific cyclin B1

## Gene Info — FZR1

Entrez GeneID	<a href="#">51343</a>
Gene Name	FZR1
Gene Alias	CDC20C, CDH1, FZR, FZR2, HCDH, HCDH1, KIAA1242
Gene Description	fizzy/cell division cycle 20 related 1 (Drosophila)
Omim ID	<a href="#">603619</a>
Gene Ontology	<a href="#">Hyperlink</a>
Other Designations	CDC20-like 1b Fzr1 protein fizzy-related protein

## Pathway

- [Cell cycle](#)

- [Cell cycle](#)
- [p53 signaling pathway](#)
- [Ubiquitin mediated proteolysis](#)

## Disease

- [Adenocarcinoma](#)
- [Esophageal Neoplasms](#)
- [Genetic Predisposition to Disease](#)
- [Ovarian Neoplasms](#)